



Welcome to

Portfields Primary School

EYFS 2026

Parent meeting for children starting

EYFS in September 2026



# How we are ready for your child

**Our Core Values**

**The Learning Environment**

**Safety and Security Measures**

**Supporting Your Child's Social & Emotional Wellbeing**

**Academic Preparedness (Play-Based Learning)**

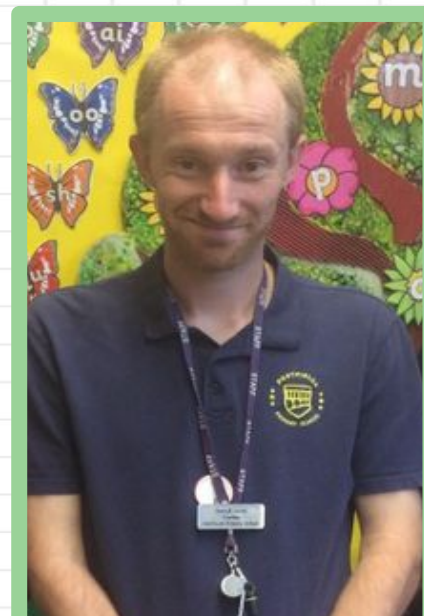
**Partnership with Parents (Working Together)**



# OUR EYFS TEAM



**Mrs Claire Bourne**  
Head of Year  
Class Teacher  
Chestnut Class



**Mr Darryl Lucas**  
Class Teacher  
Elm Class



**Mrs Charlotte Reeves**  
Class Teacher  
Oak Class



**Mrs Amy McClaren**  
Teaching and  
Learning Lead  
EYFS/KS1

**TAs  
COMING  
SOON!**





# routines and readiness

- School gates open at **8.30am**
- All children can be dropped at the classroom door from **8.30am to 8.40am**
- Doors close at **8.40am** and **register** is taken
- If your child arrives after this time, you must bring them to the school office to be registered, this will be a late mark
- If your child attends Premier wrap around, your child will be taken to class





# routines and readiness

- School gates open at 3pm
- School pick up is **3.10pm**
- If your child attends Premier wrap around, they will collect
- Please ensure that you inform the school office if anyone else will be collecting your child



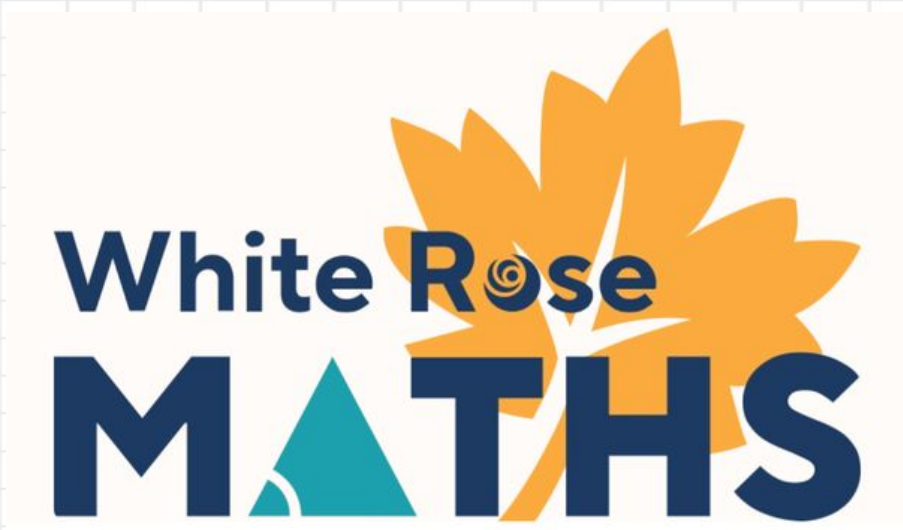


# A day at school

8.30 - 8.40am	Registration opens/closes - soft start to the day
8.40am - 11.45am	Lessons including phonics, English and topic (shorter carpet sessions increasing gradually). Staff work with your child in group work, 1:1 and in interventions. The children are in 'Explore and Learn' where they learn through enhanced and continuous provision.
11.45 - 12.45pm	Lunch - eating and playtime
12.45 - 2.50pm	Lessons including phonics, English and topic (shorter carpet sessions increasing gradually). Staff work with your child in group work, 1:1 and in interventions. The children are in 'Explore and Learn' where they learn through enhanced and continuous provision.
2.50 - 3.10pm	Soft finish including story time, celebrating learning and set up for the next day.



# Learning in lessons



[https://www.portfieldsprimaryschool.org/  
key-information/our-curriculum/eyfs](https://www.portfieldsprimaryschool.org/key-information/our-curriculum/eyfs)



# Continuous and Enhanced Provision





# Our EYFS Unit





# Lunch and Playtime





# Learning Behaviour

Be ready    Be respectful    Be safe

Be ready    Be respectful    Be safe

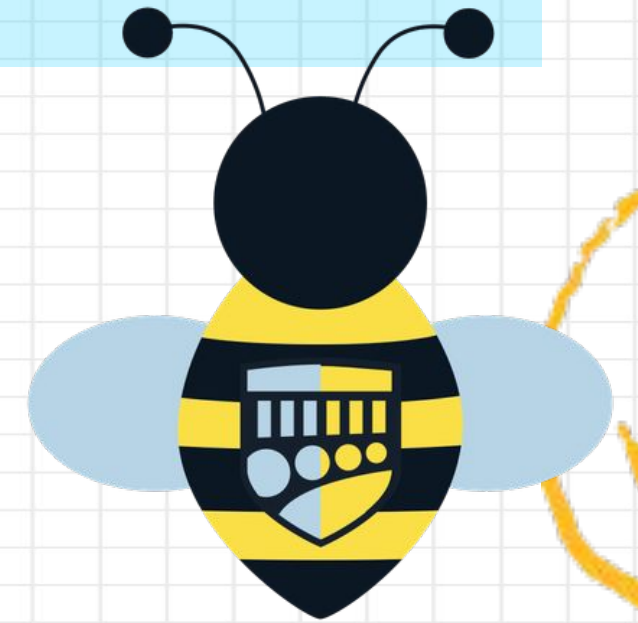
good sitting    kind words    good tidying

look after each other    magnet eyes

good listening    lining up    quiet walking

running inside    ignoring instructions    saying mean words

snatching    rude words    breaking things





# Everyone is welcome

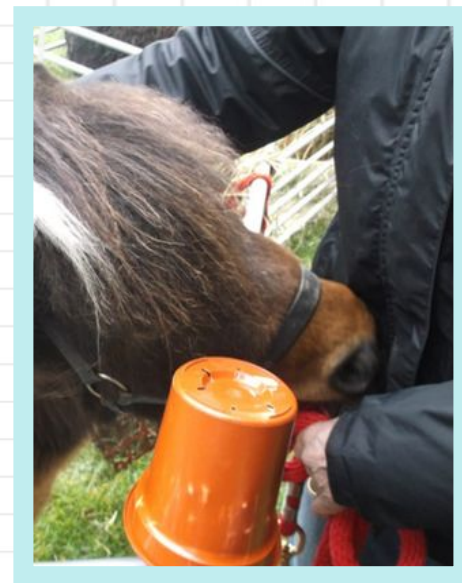




# Enrichment and wider school



PORTFIELDS STAR  
ASSEMBLY





# Getting off to the very best start





# How is school starting?

<b>Wednesday 1st July</b> <b>Sessions in class groups</b>	<b>Meet the class teacher and team and other classmates and their families</b>
<b>Thursday 3rd September</b> <b>Sessions in class groups</b>	<b>Meet and Greet – 1:1 session with your child's new teacher</b>
<b>Friday 4th September</b> <b>Two sessions half year group</b>	<b>Session with classmates</b> <b>Parents to stay for coffee and phonics session</b>
<b>Monday 7th September</b>	<b>Child will attend school all morning until after lunch.</b> <b>8.30 - 8.40am to 1.30pm</b>
<b>Tuesday 8th September</b>	<b>Your child starts full time</b>





# What your child needs

Uniform - Maisies

**MAISIES**  
Established 1963

**Equipment - your child ONLY needs:**

- **Named** water bottle
- **Named** Book bag
- **Snack** (if not having fruit)





# What your DOESN'T child need

- Pencil case or any stationery
- large hair bands or clips
- only one stud earring in each ear
- makeup
- teddy/dolls/any home toys
- no temporary tattoos
- no sweets or fizzy drinks in lunchbox



# Medical Needs





# Attendance

- Please report your child's absence by calling, emailing or reporting on



ParentMail

- Parent Mail
- For other absences, please complete a Leave of

Absence Form - collect from the office or on our website

- We may have to complete home visits if you have not reported your child's absence or we can not get hold of you



# Premier Wrap Around





# School Readiness

GOING TO THE TOILET  
INDEPENDENTLY



COPING WITH  
ROUTINES



COMMUNICATING  
NEEDS



TAKING CARE OF  
BELONGINGS



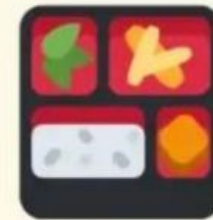
DRESSING  
INDEPENDENTLY



WORKING WITH  
OTHERS



OPENING LUNCHBOX/  
DRINK BOTTLE



BEING EMOTIONALLY  
READY



LISTENING TO AND  
FOLLOWING DIRECTIONS



Find more information  
out on our website!



# Parents as Partners



## COMMUNICATION IS KEY

- Friday Portfields Post - whole school
- Occasional year group specific emails
- Website - all information here
- Call us or come into the school office
- A quick message teacher at door
- A longer meeting arrange with office



# Parents as Partners



**Any concerns or queries:**

Check website/newsletter/Post

Class Teacher

EYFS Lead

Assistant Head/Deputy Head

Headteacher



# Friends of Portfields





# Questions

<https://www.portfieldsprimaryschool.org>