

Portfields Primary School

Inspiring Futures through Learning – October 2025

 Ambitious Learners  Rewarding Experiences  Skilled Professionals  Expert Governance  Firm Foundations  Community Champions  A safe place to be!

The academy landscape

 Ambitious Learners  Rewarding Experiences  Skilled Professionals  Expert Governance  Firm Foundations  Community Champions  A safe place to be!

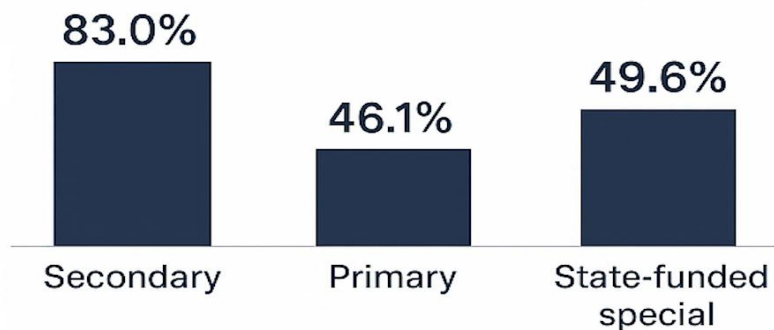
Academies and Multi-Academy Trusts in England

- Total schools in England
24,479
- Share of pupils attending
58.4%
- Estimated academies
~11,285

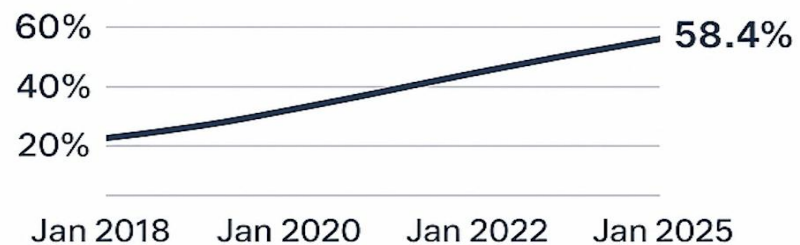
Sources

DfE's Schools, pupils and their characteristics: January 2025

Share of academies by phase



Growth over the last few years





Inspiring Futures
through Learning

Milton Keynes landscape

57 Academies:

7 infant
6 junior
3 all-through
28 primaries
10 secondaries
1 special
2 alternative
provision

49.5% of all MK schools

LA responsibilities (all schools):

- Safeguarding
- Sufficiency and Co-ordinated admissions
- SEND
- Championing the most vulnerable

52566 pupils
in Milton
Keynes

67% of these
are educated
in academies



Inspiring Futures
through Learning

A Multi Academy Trust is...

- regulated and directly accountable to the Department for Education
- funded with public money the same way as all schools and does
- able to help this public money go further by sharing services across schools (eg: additional professionals like Speech and Language therapists)
- a charitable company limited by guarantee
 - It must operate for charitable purposes only, specifically the advancement of education



Inspiring Futures
through Learning

What is a strong trust?

“Teachers and leaders in strong trusts can form **communities of practice**, sharing **evidence based** approaches and benefitting from **high quality professional development**... Strong trusts also achieve economies of scale, sharing resources, centralising functions and ensuring **strong financial governance** in order to build resilience and save **time and money to reinvest into education**”





Inspiring Futures
through Learning

Why is Portfields joining a Multi Academy Trust?

- The education landscape has changed over time – leading a school in isolation is becoming more difficult
- Governors and school leaders have carefully considered the best thing for Portfields into the future
- This consideration has taken place over 18 months and included whether to join a MAT as well as which MAT might work best
- A critical point (non-negotiable) considered has been school and trust alignment in values and culture
- Opportunities for staff development and support have also been considered – Portfields have amazing staff that are thriving and enjoy the opportunity to share their practice and learn from other professionals on a continuous basis
- Ensuring the best opportunities for our adults results in the best provision for all our children



Inspiring Futures
through Learning

Timeline

- September 2025 - Application to join IFtL has been made (to the Department of Education)
- September / October 2025 – initial consultation with staff and parents
- 1st March 2026 – proposed joining date
 - There are many factors that may affect this timeline, including legal processes that are led by organisations outside of the school or MAT
- We will keep you informed of progress regularly
- Portfields will start to access IFtL networks throughout the academic year 2025/6



Inspiring Futures
through Learning

What will
not
change?

- The uniqueness of Portfields
- The ambition for all Portfields children and families
- The adults your children are with
- Uniform and school identity
- Your school community



Inspiring Futures
through Learning

What will
be
enhanced?

- Access to opportunities for **all** children
- Access to support for all families
- Access to support for all school colleagues and leaders



Inspiring Futures
through Learning

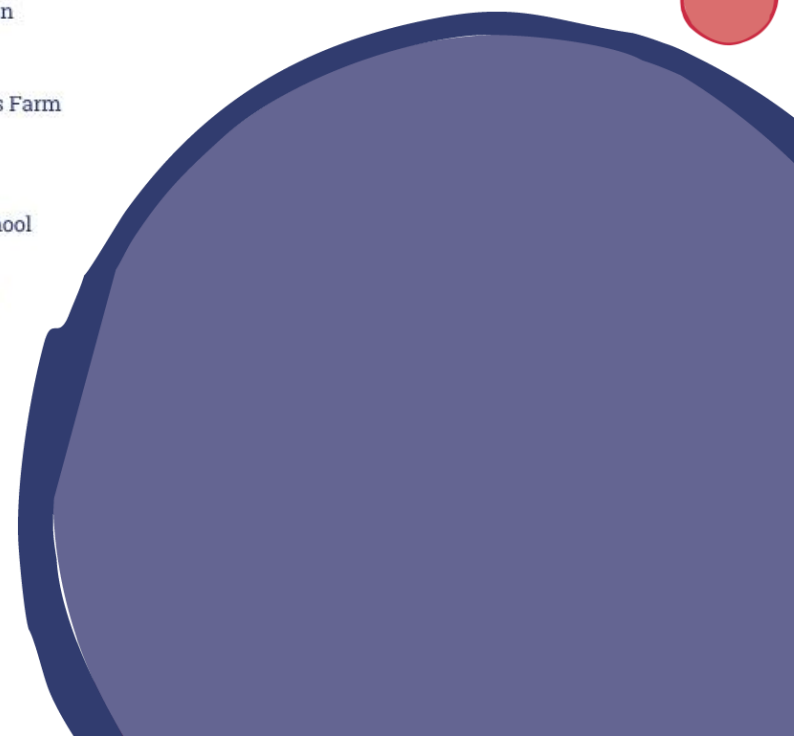
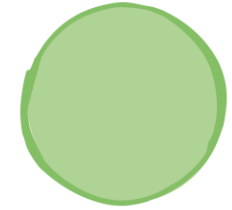
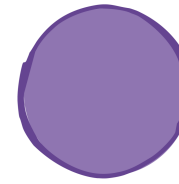
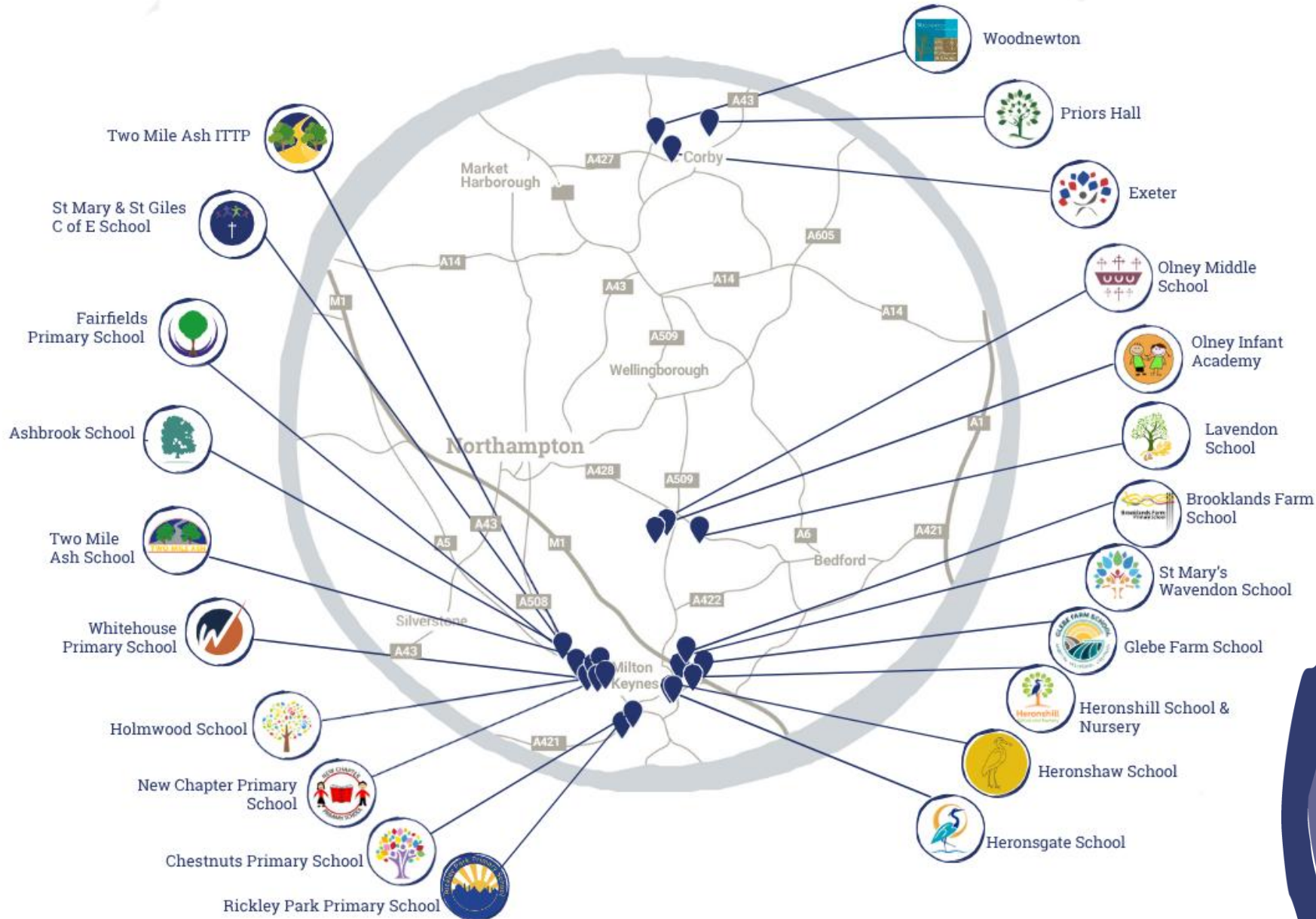
Benefits for your children

- IFtL Family – larger community to access opportunities together
- Development of adults working with your children
- Trust wide strategies
 - Supporting families
 - Inclusion
 - Early education
 - Digital technology

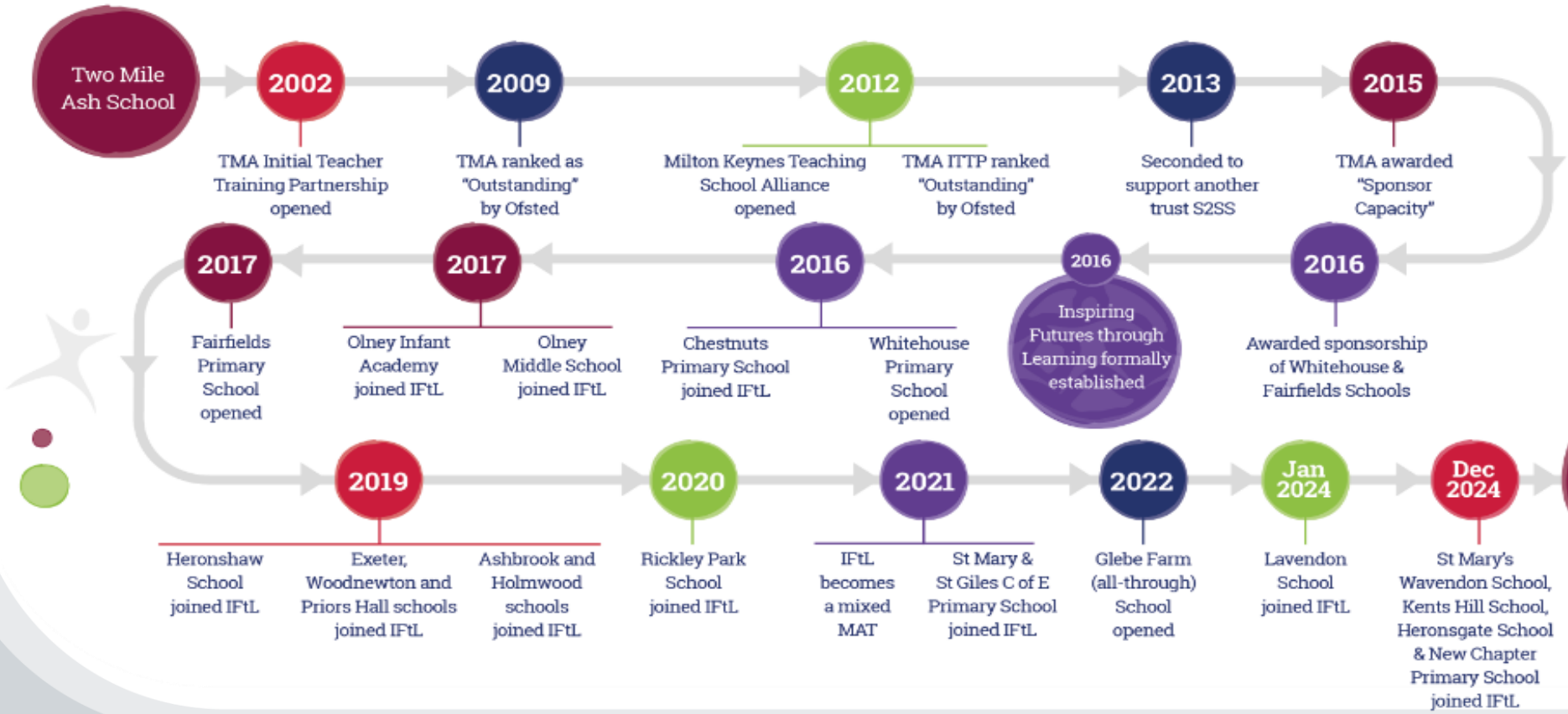
Who are Inspiring Futures through Learning (IFtL)?

 Ambitious Learners  Rewarding Experiences  Skilled Professionals  Expert Governance  Firm Foundations  Community Champions  A safe place to be!

Our IFtL Family

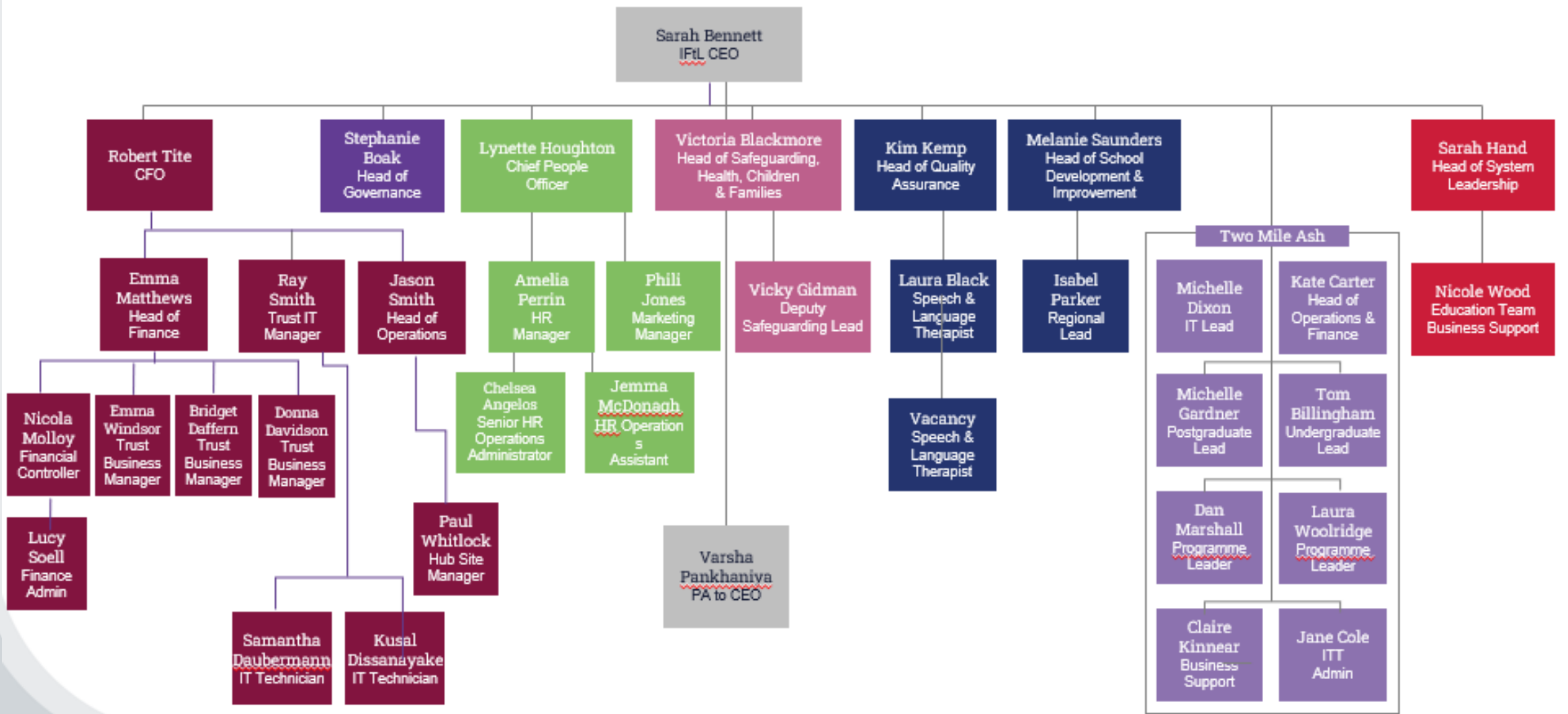


IFtL – Who we are



IFtL in Numbers







**Inspiring Futures
through Learning**

Our vision

To inspire the futures **of us all**
through learning **together**

Our values

F

Fun

We enjoy what we do. We make positive contributions. We take pleasure from success.

U

Unique

We celebrate difference. We champion diversity. We are divergent in our thinking.

T

Together

We share the same promise. We support and encourage. We cooperate, collaborate and care for each other.

U

Unafraid

We are confident to challenge. We are courageous in our thinking. We are robust in our decisions.

R

Responsible

We act in the best interests of our communities and each other. We are accountable for our actions. We stand up to scrutiny.

E

Energetic

We are positive and dynamic. We explore new worlds. We innovate to achieve.

S

Safe

We are secure in our beliefs. We are protective and firm. We make decisions together.

Our IFtL family

As an IFtL family we understand, and are committed to, our responsibility in shaping and influencing the lives of future generations. We do this in partnership with our families, our communities, fellow educators, and other local and regional partners. We also do this with national policy makers and global leaders. We are committed to the levels of collaboration required to shape and protect the future. We start with our schools, our people, our family, and from there we grow. At IFtL we are never alone – one united family striving for excellence in all that we do.

Our drivers



Creating ambitious, lifelong learners in strong schools

Imaginative schools that provide accessible, equitable, aspirational opportunities for all children to flourish



Delivering high standards of curriculum for all within a positive learning culture

Engaging, adaptive, evidence based and rewarding lessons that build rich knowledge for life



Investing in staff development to create innovative, research led, career pathways

Nurture, train, recruit, develop, deploy and retain great professionals throughout their careers and the wider system we serve



Ensuring expert governance with a strong local identity

Robust and ethical accountability measures, engaging effectively with parents and the wider community



Strong financial management with efficient and effective operational structures

Delivering value for money and prioritising the use of resource to reinvest in educational quality



Being leaders in our community recognising our wider civic responsibility

Work with other civic structures to advance education for the public good in the communities we serve and beyond



Nurturing a safe, secure and engaging environment in which we all thrive

Keeping everyone safe and well within an IFtL culture of collaboration and care

Our outcomes

Ambitious Learners Rewarding Experiences Skilled Professionals Expert Governance Firm Foundations Community Champions A safe place to be!



Our values

F

Fun

We enjoy what we do. We make positive contributions. We take pleasure from success.

U

Unique

We celebrate difference. We champion diversity. We are divergent in our thinking.

T

Together

We share the same promise. We support and encourage. We cooperate, collaborate and care for each other.

U

Unafraid

We are confident to challenge. We are courageous in our thinking. We are robust in our decisions.

R

Responsible

We act in the best interests of our communities and each other. We are accountable for our actions. We stand up to scrutiny.

E

Energetic

We are positive and dynamic. We explore new worlds. We innovate to achieve.

S

Safe

We are secure in our beliefs. We are protective and firm. We make decisions together.

- Believe
- Respect
- Involve
- Dream
- Grow
- Empower



Our Ambitions for 2022 – 2025

IFtL is an ambitious, dynamic and multi-faceted MAT with a strong vision that demands excellence, innovation and focus. We are realistic about ourselves and the environment in which we operate – we are clear that solid foundations and addressing challenges with a timely, solution focused approach allows us the flexibility to relentlessly continue in our vision to inspire futures for us all.

Our Strategic Plan outlines our approach for the next three years of development and growth of IFtL. Through awareness, analysis and recognition of our current position and environmental factors, we have identified specific areas of focus for the next period that enhance, strengthen and complement our overall vision and Strategic Priorities.

Our Strategic Plan Strands are:

-  **Future Focused**
-  **Leadership in our IFtL Culture**
-  **Equitable Futures**
-  **Strong Schools**

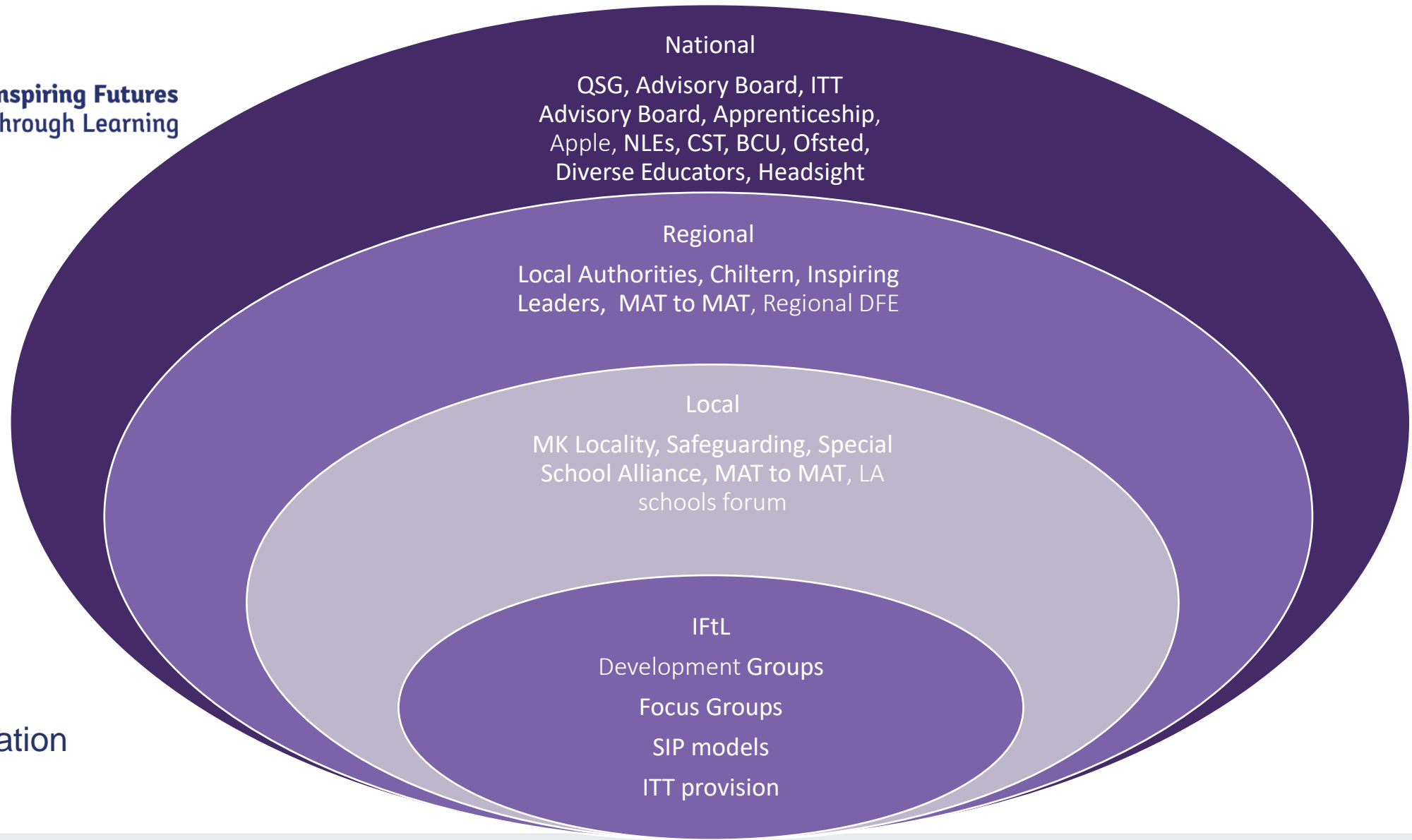
These Strategic Plan Strands interconnect – each area of development and enhancement will purposely affect the direction of the organisation and will impact on the whole. Identifying the Strands themselves allows us to be clear in our directional focus and our success criteria.





Inspiring Futures
through Learning

Collaboration





Inspiring Futures
through Learning

Improvement and Impact

Minimum
Good

Outstanding
EYFS

Growing and
retaining
people

Excellence from
Inadequate

Above national
Attendance

IFtL strong
pupil outcomes

IFtL wide strong
progress
measures

Financial
Sustainability



Inspiring Futures
Learning

1:1
FUTURES



Innovation

 Ambitious Learners  Rewarding Experiences  Skilled Professionals  Expert Governance  Firm Foundations  Community Champions  A safe place to be!



Teacher training routes with IFTL

- BAHons
- Postgraduate Primary
- Postgraduate Secondary
- Postgraduate Apprenticeships
- CPD pathways for all staff



Thank you and lovely to meet you!